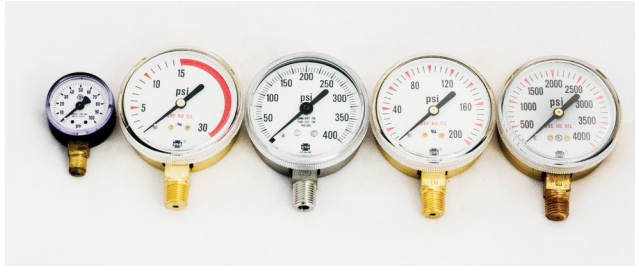


## PRESSURE GAUGES

(800) 649-6704 or (617) 387-5050  
www.MiddlesexGases.com  
Info@MiddlesexGases.com



### DESCRIPTION

The selection of brass, stainless steel, and monel® gauges presented here represent those used on pressure regulators offered in this catalog. They can be used as repair parts or for installation in other systems.

### FEATURES

- 1/4" NPT lower male connection.
- Cleaned for oxygen service - brass and stainless steel only.

### HOW TO ORDER

#### BRASS WITH BRASS CASE - 2 1/2" DIA.

| Model           | Pressure Range - psig |
|-----------------|-----------------------|
| 9131-4PM-0015RL | 0-30 (15RL)           |
| 9131-4PM-0030   | 0-30                  |
| 9131-4PM-0060   | 0-60                  |
| 9131-4PM-0100   | 0-100                 |
| 9131-4PM-0200   | 0-200                 |
| 9131-4PM-0400   | 0-400                 |
| 9131-4PM-2000   | 0-2000                |
| 9131-4PM-6000   | 0-6000                |
| 9131-4PM-7500   | 0-7500                |

#### 316 STAINLESS STEEL WITH STAINLESS STEEL CASE - 2 1/2" DIA.

| Model          | Pressure Range - psig |
|----------------|-----------------------|
| 9132-4PM-3030  | 30" 0-30              |
| 9132-4PM-0030  | 0-30                  |
| 9132-4PM-0060  | 0-60                  |
| 9132-4PM-0100  | 0-100                 |
| 9132-4PM-0200  | 0-200                 |
| 9132-4PM-0400  | 0-400                 |
| 9132-4PM-1000  | 0-1000                |
| 9132-4PM-2000  | 0-2000                |
| 9132-4PM-3000  | 0-3000                |
| 9132-4PM-6000  | 0-6000                |
| 9132-4PM-10000 | 0-10000               |

#### MONEL® WITH STAINLESS STEEL CASE - 2 1/2" DIA.

| Model         | Pressure Range - psig |
|---------------|-----------------------|
| 9133-4PM-0100 | 0-100                 |
| 9133-4PM-0300 | 0-300                 |
| 9133-4PM-1000 | 0-1000                |
| 9133-4PM-3000 | 0-3000                |

Other sizes and ranges available.

## GAUGES WITH FACE SEAL FITTINGS

### DESCRIPTION

On some high purity regulators the gauges are connected to the regulator body by using face seal fittings rather than NPT threads.

### FEATURES

- 1/4" female face seal connection.
- Dual scale dial psig/bar.
- Cleaned for oxygen service.

### HOW TO ORDER

316 stainless steel with stainless steel case 2" dia.

| Model         | Pressure Range                       |
|---------------|--------------------------------------|
| 9122-4VM-3030 | 30" vac.- 0-30 psig (-1.0 - 2 bar)   |
| 9122-4VM-3060 | 30" vac.- 0-60 psig (-1.0 - 4 bar)   |
| 9122-4VM-3100 | 30" vac. - 0-100 psig (-1.0 - 7 bar) |
| 9122-4VM-0200 | 0-200 psia (0-14 bar)                |
| 9122-4VM-     |                                      |
| 9122-4VM-     |                                      |
| 9122-4VM-     |                                      |

