

## LECTURE BOTTLE EQUIPMENT

Due to the small size and limited contents of lecture bottles, special equipment is recommended for use. This special equipment is described here and on the following page.

### LECTURE BOTTLE REGULATORS

#### SERIES 3900

The Series 3910 regulator is designed for use with non-corrosive, non-toxic gases in lecture bottles. The Series 3920 lecture bottle regulator is designed for use with corrosive, and/or toxic lecture bottle gases. These light weight, compact single stage regulators incorporate many features found in our larger high purity regulators.

#### FEATURES

- Small compact design.
- Needle valve installed on outlet.

#### SPECIFICATIONS

	Series 3910	Series 3900
Max. Inlet Pressure:	3000 psig	3000 psig
Operating Temp. Range:	0 to +140°F	-40 to +140°F
Flow Coefficient (Cv):	0.02	0.08
Body Inlet Connection:	1/8" NPT female	1/8" NPT female
Body Outlet Connection:	1/4" NPT female	1/8" NPT female
Outlet Valve Connection:	1/4" NPT male	1/8" NPT male

#### MATERIALS OF CONSTRUCTION

	Series 3910	Series 3920	Series 3900
Body:	chrome-plated brass	316 stainless steel	Aluminum
Internal Seals:	nylon	Teflon®	Teflon®
Seat:	polyurethane	Teflon®	Teflon®
Diaphragm:	neoprene	316 stainless steel	316 stainless steel
Filter:	50 micron sintered bronze	50 micron stainless steel	50 micron stainless steel
Bonnet:	chrome plated brass	anodized aluminum	anodized aluminum
Gauges:	chrome plated brass	stainless steel	brass
Outlet Valve:	chrome plated brass	stainless steel	brass

#### HOW TO ORDER

Model Number	Del. Press. Range	Del. Press. Gauge	Inlet Press. Gauge
	psig	psig	psig
3910-15-170	2-15	0-30	0-4000
3910-60-170	4-60	0-100	0-4000
3910-15-180	2-15	0-30	0-4000
3910-60-180	4-60	0-100	0-4000
3900-30-170	2-30	0-60	0-3000
3900-30-180	2-30	0-60	0-3000
3900-60-170	2-60	0-100	0-3000
3900-60-180	2-60	0-100	0-3000
T3920-30-180	2-30	0-60	0-3000
T3920-60-180	2-60	0-100	0-3000



Series 3910



Series 3900

Middlesex Gases & Technologies, Inc.  
292 Second Street  
PO Box 490249  
Everett, MA 02149

(800) 649-6704 or (617) 387-5050  
www.MiddlesexGases.com  
Info@MiddlesexGases.com

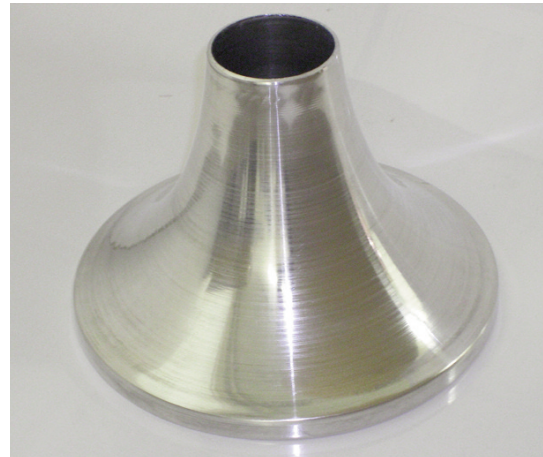
## LECTURE BOTTLE EQUIPMENT

### LECTURE BOTTLE HOLDERS

Lecture bottles have rounded ends and require some means of support when in use. We provide two types of holders here that meet most requirements.

#### NON-TIP STAND - MODEL 475

This stand offers a convenient method of securing a lecture bottle on a table or lab bench. The stand is made of light weight brushed aluminum and, yet the large diameter base provides stability even when a regulator is installed on the bottle.



475

#### WALL MOUNT LECTURE BOTTLE BRACKET MODEL 480

This bracket is made of anodized aluminum and has spring clips that provide firm, secure support to the lecture bottle. The bracket is ideal for securing lecture bottles to lab cart or bench set-ups, in carrying cases for portable systems, or in storage cabinets.



480

### LECTURE BOTTLE CONTROL VALVES

These valves are specifically designed for attachment to lecture bottles to dispense their contents. They do not control pressure and should only be used when the operator is in attendance.



### MATERIALS OF CONSTRUCTION

	3990	3991	3992
Body	brass	brass	316 stainless steel
Stem	303 stainless steel	303 stainless steel	316 stainless steel
Packing	Teflon®	Teflon®	Teflon®
Tubing	hose barb	brass	316 stainless steel

### HOW TO ORDER

Model	Inlet Connection	Outlet Connection
3990-CGA	Specify CGA 170 or 180	1/4" O.D. hose barb
3991-CGA	Specify CGA 170 or 180	1/4" compression fitting w/10" long brass tubing
3992-180	CGA 180	1/4" compression fitting w/10" long SS tubing

Middlesex Gases & Technologies, Inc.  
292 Second Street  
PO Box 490249  
Everett, MA 02149

(800) 649-6704 or (617) 387-5050  
www.MiddlesexGases.com  
Info@MiddlesexGases.com